

## ESF VISION

Our vision is for every student to be the best that they can be

At RCHK, through our strategic plan we aim to establish our identity as a compassionate community that uses what we learn to make a difference

## STRATEGIES

Cultivate our community so that it involves everyone and helps everyone to flourish

Foster a love of learning and creative thinking

Connect learning with doing things that matter and helping others

Transform the art of teaching based on the science of learning

Commit to sustainable practices that are balanced



# College-wide Strategic Plan 2020-2025



TO SEEK TO SERVE TO STRIVE



## WHY

To know our students and support each child to be the best that they can be

## WHAT

We want every student to know, and be able to share what they can do now and next in their development.

## WHO

### All stakeholders

#### Champions:

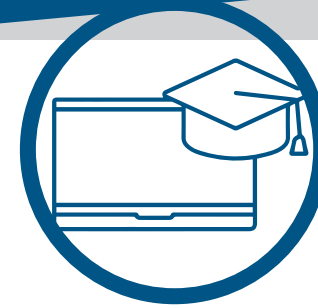
Natasha Williams (Head of Secondary)  
 Jess Davey-Peel (Vice Principal, DP Coordinator)  
 Stephanie Howdle-Lang (Vice Principal Primary)  
 Geoff Wheeler (Vice Principal Secondary)

## ACTIONS (January 2020 - August 2021)

- Develop and share a graphic to explain our assessment philosophy and how it relates to our overarching beliefs
- Implement a co-designed platform to formalise recording of data
- Determine with students the types of data which are available and relevant
- Determine ways in which stakeholders can effectively use data
- Develop and implement internal review structures of data gathering processes

## Secondary Additional Priorities

- Co-authored design and implementation of new student transcript
- Research and development of co-designed microcredentials



## WHY

To maximise environments to enhance learning, teaching and wellbeing

## WHAT

Finding and creating environments for the learning we seek

## WHO

### All stakeholders

#### Champions:

Harry Brown (Principal)  
 Ania Zielinska (Vice Principal, CW)  
 Jason Doucette (Vice Principal, PYP Coordinator)

## ACTIONS (January 2020 - August 2021)

- Consolidate current research around the cultivation of effective learning environments
- Articulate & share a set of beliefs/vision for learning environments
- Audit and review footprint of the school in terms of best use of space
- Audit current and future needs for space
- Reconcile a sustainable vision in relation to current practices
- Plan learning spaces reflecting beliefs and ascertain priorities
- Articulate a research-based approach to effective learning environments



## WHY

We're developing our approach to learning so that our students will know themselves better and find meaning in their lives

## WHAT

Teachers transform planning while making sure every learner - adult and child - curates their progress and stimulates their thinking.

## WHO

### All stakeholders

#### Champions:

Joanne Ferarri (Vice Principal Primary)  
 Brandy Stern (Vice Principal, MYP Coordinator)  
 Jason Doucette (Head of Primary)

## ACTIONS (January 2020 - August 2021)

- Review of current research on supporting self-directed learning, feedback and reflection
- Collect data College-wide with regard to supporting self-directed learning, feedback and reflection

### Define expectations for:

- What students would typically say at different ages if they know themselves as learners
- The data that will be collected
- Self-directed learning at RCHK (context-specific language and practices, examples of best practice)
- Elements of effective feedback

### Implement:

- Personal inquiry time 'My Time' - develop using an iterative process
- Focused reflection connected to learning intentions and success criteria
- Self-reflection explicitly in feedback
- The collection of students' interests and passions data, which will be used to enhance learning.

**Action Research:** How can learning be enhanced through mixed age and/or flexible groupings?